

# TWRA BITE

**Bass  
Information  
From Tournament  
Entries**



## 2001

Tennessee Wildlife Resources Agency  
Fisheries Management Division  
Ellington Agricultural Center  
P. O. Box 40747  
Nashville, TN 37204



## **INTRODUCTION**

The Tennessee Wildlife Resources Agency (TWRA) initiated the Bass Information from Tournament Entries (B.I.T.E.) program in 1989 as a cooperative effort between the agency and Tennessee's organized bass fishing clubs. Completing its thirteenth year, the objective of the program has been to establish a closer working relationship with bass clubs and tournament organizations through the mutual exchange of bass tournament data. The B.I.T.E. program summarizes catch data already being collected by participating clubs on reservoir bass populations. These data will supplement T.W.R.A.'s reservoir fishery database, while providing bass clubs with a statewide summary of tournament results for their interest and possible use in tournament site selection.

Based on TWRA creel survey results, reservoir bass fishing is one of Tennessee's important recreational resources with approximately 34 percent of fishing effort statewide geared toward black bass. These bass anglers produced an estimated 4.1 million angler hours of effort in pursuit of black bass in 2000.

Economically, fishing generated over \$474 million in total expenditures by anglers in Tennessee during 1996 (USFWS 1996), the latest year for which data is available. A new study should be concluded this year. Total trip expenditures by bass anglers on reservoirs in Tennessee was over 11.3 million dollars during 2000. These expenditures only included items such as fuel, food, bait, and lodging, but excluded boat and vehicle costs.

Through 2001, 4,308 tournament reports have been summarized. More than 138 clubs or tournament organizations participated through the first thirteen years of the program. Bass anglers have spent over 1,236,955 hours collecting data for this program, which included 248,053 bass weighing 450,777 pounds.

## **METHODS**

Membership in the B.I.T.E. program was solicited via fishery biologists, creel clerks, wildlife officers, statewide news releases, TWRA's web site, and support from the Tennessee B.A.S.S. Federation. Direct mailings and preliminary data reports were used in main-

taining the support of the previous years' clubs. News releases were also circulated to inform the public of the B.I.T.E. program.

Participating clubs and tournament organizations were sent the previous year's annual report, along with postpaid tournament report cards to be completed and mailed after each tournament (Figure 1). Completion of one card per tournament was all that was required from each club. Electronic mail and fax was also used to collect tournament data. Clubs were assigned individual code numbers to insure confidentiality. Tournament data cards were checked for accuracy and entered into a computer database. Club officers were contacted when data were incomplete or suspected to be erroneous.

Statewide tournament data were summarized by club and by reservoir. Various indices including fishing success (weighing in one or more bass), average weight, bass per day, and pounds per day were calculated to measure bass fishing tournament characteristics on specific reservoirs statewide and for each club. Since the length of a fishing day varied between tournaments, an angler-day was defined as 10 hours of fishing effort. Bass weight listed in the tables is reported in pounds. In the past, Ft. Loudoun and Tellico reservoirs have been combined because the anglers fishing the tournament could "lock through" to fish either reservoir. This year, some clubs specified that tournament anglers could only fish one or the other. Therefore, in Table 2 and 4 these reservoirs are separated based on this specific reporting.

Reservoirs with five or more tournament reports were ranked according to important tournament characteristics. A minimum of five tournaments per reservoir is considered necessary for minimum confidence. The categories were as follows: percent successful (percent of anglers with one or more bass at weigh-in), average bass weight, number of bass per angler-day, pounds of bass per angler-day, and hours required to catch a bass five pounds or larger. Values were assigned to each rank and an overall rank was determined for each reservoir by averaging the values of the five categories. The intent of this ranking system was not to rank the "best" or "worst" reservoirs in the state, but to provide club members with a reference guide for possible use in tournament site selection. Unless otherwise noted

in this report, the term “bass” is used collectively to include largemouth, smallmouth, and spotted (Kentucky) bass.

## **RESULTS AND DISCUSSION**

The B.I.T.E. program was supported by fifty-two clubs or tournament organizations during 2001, which submitted 463 tournament reports (Table 1). This is down from 484 reports in 2000. Reports were also received from the Alabama Department of Conservation and Natural Resources (53) and the Mississippi Department of Wildlife, Fisheries, and Parks (10), for reservoirs on the Tennessee River system, and are included in Table 2. Club representatives did a great job filling out the report cards, and only 3 were rejected due to incomplete or erroneous data. Thirty-seven clubs (71%) submitted five or more tournament reports, down 1 percent from last year. Eighteen clubs submitted 10 or more reports. On average, 9 reports were received per club. Higher numbers of reports allow estimates to reflect fishing conditions more closely, and not just a good or bad day’s fishing by one or two clubs. All club representatives should remember that each tournament report is important to this program. A list of clubs and tournament organizations contributing tournament results for this report are presented in Table 5.

The following reservoirs had exceptions to the statewide black bass regulations of five fish daily with no length restriction during 2001: (LMB=Largemouth Bass, SMB = Smallmouth Bass, SPB = Spotted Bass) Barkley 15" minimum on LMB and SMB; Boone 15" minimum on LMB and SMB (15 fish creel limit for SPB); Center Hill 15" minimum on LMB and SMB, 12" minimum on SPB; Cheatham 14" minimum on LMB and SMB; Cherokee 15" minimum on LMB and SMB (15 fish creel limit for SPB); Chickamauga 14" minimum on LMB and SPB (18" minimum on SMB with one fish limit); Dale Hollow 15" minimum for LMB (for smallmouth bass 16-21" PLR with one under 16" and one over 21" daily); Fort Loudoun/Tellico 14" minimum on LMB and SMB (15 fish creel limit for SPB); Guntersville 18" minimum on SMB with one fish limit; Kentucky Lake 14" minimum on LMB and SMB; Melton Hill 15 fish creel limit for SPB; Nickajack 14" minimum on LMB and SPB (18" minimum on SMB with one fish limit); Normandy 15" minimum on LMB and SMB; Norris 14" minimum on LMB, 18" minimum on SMB (15 fish creel limit for

SPB); Old Hickory 14" minimum on LMB and SMB; Percy Priest 15" minimum on LMB and SMB; Pickwick 14" minimum on SMB; Reelfoot Lake 15" minimum on all species; Tims Ford 15" minimum on LMB and SMB; Watts Bar 14" minimum on LMB and SPB; and Watauga 12" minimum on LMB and SMB (15 fish creel limit for SPB). Guntersville and Wilson reservoirs in Alabama had a 15" minimum size limit, while Wheeler had no size limit. Sardis had a 16-20" PLR with 7 bass per day, only 3 over 20".

During 2001, tournament reports were received for 37 bodies of water that were fished 161,012 hours (Table 2). Tournaments averaged 39 anglers per event, for an average of 7.8 hours each. The average tournament had 47 bass weighing 92 pounds. Most tournaments were received from Chickamauga (56), followed by Pickwick, Kentucky Lake, and Watts Bar. Cheatham, Cherokee, Douglas, Guntersville, Percy Priest, Tims Ford and Wheeler each had 20 or more tournament reports. Fourteen lakes were represented by 20 or more reports in 2000. The more reports received from each reservoir increases the size and utility of the statewide database and provides more representative catch statistics from which meaningful summaries can be prepared. Of the 20,569 bass anglers competing, 12,142 (59%) were successful. These anglers brought 25,493 bass (12 inches and larger) weighing 49,248 pounds to weigh-ins. Average weight of bass caught in-state ranged from 1.26 pounds on Ft. Patrick Henry Reservoir (one tournament) to 3.45 pounds on Reelfoot Lake (one tournament). Overall, the average weight was 1.93 pounds, up slightly from last year's 1.80 pounds. Fishing success on in-state reservoirs ranged from a high of 3.23 bass per angler-day at Douglas to 0.51 at Normandy reservoir. The overall average fishing success was 1.58 bass per angler-day. Pounds per angler-day was highest for Reelfoot Lake at 7.92, and was lowest for Normandy Reservoir at 0.90 pounds per angler-day. The overall average was 3.06 pounds per angler-day.

B.I.T.E. club participants used a self-imposed length limit of 12 inches on 34% of reported tournaments where length limits did not exist. Approximately 98% of all bass caught by B.I.T.E. participants were released. Approximately 9% of individual anglers brought in limits of bass.

A total of 336 bass, weighing five pounds or more, was reported caught during 2001 (down from 376 in 2000), with an overall catch rate of one 5-pound bass or larger for every 479 hours of fishing (a decrease from last year's average of 509 hours). The largest bass reported was 8.73 pounds taken from Gunterville in October, and reported by Professional Bass Fisherman, Inc. Gunterville led all reservoirs in the catch of bass five pounds and larger with 58 fish, followed by Pickwick with 45. A total of 11 bass seven pounds and larger were reported in 2001 (Table 3) with most (54%) of these big fish being caught in March. Fifteen bass seven pounds or larger were reported in 2000.

The seasonal distribution of tournament fishing effort, including night tournaments, is depicted in Figure 2. Most tournaments were held during March, April and May. Night tournaments accounted for approximately 21% of tournaments with most occurring in June through August.

Of the 37 bodies of water from which tournaments were reported, 25 had 5 or more tournaments reported (four less than in 2000). Relative ranks of these 25 reservoirs within 5 categories were determined and the following comments relate only to these reservoirs (Table 4). Percent successful anglers (those with one or more fish) ranged from 29.7% at Chickamauga to 88.1% at Douglas. The average was 60.5%. Average weight of bass caught ranged from 1.27 pounds at Melton Hill (no size limit) to 2.80 at Barkley (15" size limit). The average weight for these reservoirs was 1.98 pounds. Catch rates expressed as bass per angler-day ranged from 0.76 at Percy Priest reservoir (15 inch size limit) to 3.23 at Douglas (no size limit). Catch rate as pounds per angler-day ranged from 1.78 at Percy Priest Reservoir to 4.70 at Douglas. The average was 2.90 pounds per angler-day. Anglers at Tellico expended the least amount of time required to catch a bass 5-pounds or larger (120 hours).

Overall, using the relative ranking procedure, Gunterville reservoir ranked the highest, replacing Douglas, which had ranked highest overall for the past four years. (Table 4). Kentucky Lake ranked second and Pickwick third. Remember, the intent of this ranking procedure is not to determine the "best" reservoir, but to characterize the bass fishery of each reservoir. Anglers should first look at the category that is important to them. The over-

all rating would be used to narrow the choices. For example, Douglas produces high numbers of fish but of relatively low average weight. It ranked the highest for pounds per angler-day, a measure important at weigh-in. If you want to catch big fish it may not be the “best” place to go, but if you want to catch good numbers of fish, you may want to consider Douglas near the top of your list. It is important to remember that these rankings are relative in nature and sensitive to fluctuations in bass abundance and size structure. The rankings are also affected by varying environmental conditions and angling pressure from year to year.

Bass populations managed with harvest and length restrictions in this report are apparent when compared to those populations without restrictions. Length limits are imposed to increase the number of fish below a minimum length or within a specified Protected Length Range(PLR). Since all minimum lengths and PLRs exceed the 12-inch limit fished in most tournaments (except Watauga), they will reduce the total harvest in number and possibly weight. However, once the length restrictions have had time to work, average weight will be higher. In the B.I.T.E. report, length limit reservoirs usually rank near the bottom for percent success and bass/angler-day, but high in average weight. For instance, bass per angler-day averaged 1.58 for all 25 bodies of water, but were low at Barkley and Percy Priest with 0.95 and 0.76, respectively. Statewide average weight was 1.93 pounds but exceeded 2.30 pounds at Barkley, Boone and Percy Priest.

Tournament fishing success for number and pounds of bass per angler-day stayed relatively the same as last year (Figure 3). Statewide, average weight increased slightly from the last two years. The hours required to catch a bass 5 pounds or larger during the year (479) declined slightly from last years all time high of 509. However, this decrease in hours does not indicate an increase in the number of bass five pounds or larger. The number of bass 5 pounds or larger has declined since 1997 (876 in 1997; 637 in 1998; 426 in 1999; 376 in 2000; to 336 in 2001). It should be noted that a similar increase in hours and reduction in the number of bass 5 pounds or larger has also occurred in Alabama, Arkansas and Oklahoma in the past few years.

According to TWRA surveys, growth rates of bass in Tennessee reservoirs have remained relatively unchanged with forage densities ranging from good to excellent. However, bass abundance has been impacted somewhat in recent years, as low reproductive success or failures have occurred on many reservoirs. Fish population abundance cycles to some degree naturally, however water level fluctuations and habitat changes (cover/structure) contribute to this cycling. Increased mortality of larger fish is on the minds of many fisheries agencies, especially as it relates to the largemouth bass virus (LMBV). Since 1995, LMBV has been found in bass populations in at least 15 states, including Tennessee. Bass kills have been attributed to this virus in Alabama, Arkansas, Georgia, Illinois, Indiana, Louisiana, Michigan, Mississippi, Oklahoma, South Carolina, and Texas. LMBV outbreaks appear to be triggered by a combination of stress and heat and adult bass larger than 2 pounds are most affected. Thus far there has not been a fish kill attributed to LMBV in Tennessee, although the virus has been found in every reservoir where the Agency has tested for it. The occurrence of the virus in sampled Tennessee reservoirs during 2001 ranged from 5% to 28%. This is a decrease from the 7% to 47% occurrence during 2000.

Much is still unknown about this virus and the full effect it has on bass populations, such as how it is spread, why it primarily affects larger fish and its long term impact. In an effort to learn more about the virus and the impact on the resource the U.S. Fish and Wildlife Service has provided grants to four studies that focus on the virus. Tennessee is one of several states that will participate in these new studies being conducted by several universities and the U.S. Fish and Wildlife Service's Fish Health Center at Warm Springs, Georgia.

Preliminary recommendations from LMBV investigators include cleaning the live wells and weigh-in tanks with at least a 5% solution of bleach and allowing them to dry out for several days between tournaments. Also, when not fishing competitively, releasing fish immediately will provide the highest survival and eliminate stress and mortality associated with holding fish in a live well for extended periods of time. If fish are to be harvested they should put on ice and not held in live wells.

We do not know what effect, if any, LMBV has on the reduction in catch of larger bass in Tennessee, but TWRA fisheries biologists are continuing to monitor reservoir bass



populations and working with researchers studying the LMBV. Efforts will also continue with federal and state agencies, universities and private groups in improving fish habitat, including water level management. We will continue to rely on bass clubs and tournament organizations to provide tournament data so that we can continue to follow the trends. Please report any unusual bass die offs to the nearest TWRA regional office. For further information on the LMBV visit the Agency's website at: **[www.tnwildlife.org](http://www.tnwildlife.org)**.

Occasionally bass anglers express concern regarding the lack of available information on handling tournament bass. So we are providing suggestions on bass handling techniques and live wells that reduce bass mortality during tournaments in the back of this report.

Also, B.A.S.S. has a new publication that will be available in March 2002 titled "Keeping Bass Alive: A Guidebook for Anglers and Tournament Organizers". According to B.A.S.S, this publication will help tournament anglers and organizers maximize the survival of bass caught and released in bass tournaments. To request a copy call 334/272-9530, ext. 404 or visit their website at: **[www.bassmaster.com](http://www.bassmaster.com)**.

The Appendix included in this report provides anglers with a historical record of how reservoirs have performed in the B.I.T.E. program since 1989. Please note that these graphs were not restricted to reservoirs with five or more tournaments. Data points for some years were represented by only one tournament, or data were completely absent in some years. Reservoirs which had data reported for three years or less were not included. Readers should be aware that the scales on the vertical graph axes vary in range, which must be considered when comparing reservoirs.

This B.I.T.E. report was possible because of the time and effort these clubs or tournament organizations have taken in contributing bass tournament data to T.W.R.A. (Table 5). With their continued support, and the needed support of other bass clubs across the state, the program can continue to be successful in yielding important information about Tennessee's reservoir bass resources.

Table 1. Tournament summary for bass clubs participating in the 2001 B.I.T.E. program.

CLUB	TOURNAMENTS	NUMBER ANGLERS	NUMBER SUCCESSFUL	BASS CAUGHT	BASS WEIGHT	BASS=>5LB.	TOTAL HOURS	PERCENT SUCCESS	AVERAGE WEIGHT	BASS PER ANGLER-day*	LBS. PER ANGLER-day*	HOURS PER BASS=>5LB.
1	17	606	245	428	666	7	2424	40.43	1.56	1.77	2.75	346
2	9	267	154	506	892	4	2433	57.68	1.76	2.08	3.67	608
3	15	256	141	309	491	3	2048	55.08	1.59	1.51	2.40	683
4	8	1054	850	1540	3537	19	9486	80.65	2.30	1.62	3.73	499
7	6	1587	1059	1947	4243	27	13135	66.73	2.18	1.48	3.23	486
14	12	277	161	343	559	2	2161.5	58.12	1.63	1.59	2.59	1081
17	10	333	175	376	717	1	2165	52.55	1.91	1.74	3.31	2165
18	4	53	26	94	131	1	424	49.06	1.39	2.22	3.08	424
21	16	336	266	449	810	7	2932.5	79.17	1.80	1.53	2.76	419
22	1	12	10	15	25	0	108	83.33	1.68	1.39	2.34	-
23	8	150	130	259	414	6	1289	86.67	1.60	2.01	3.21	215
26	24	853	408	799	1653	20	6279	47.83	2.07	1.27	2.63	314
27	6	76	76	155	263	0	760	100.00	1.69	2.04	3.46	-
30	1	18	12	51	111	3	162	66.67	2.19	3.15	6.88	54
38	12	299	87	200	395	3	2521.5	29.10	1.97	0.79	1.57	841
39	6	110	60	190	397	3	880	54.55	2.09	2.16	4.51	293
45	9	78	60	198	392	3	879	76.92	1.98	2.25	4.46	293
52	8	169	90	184	272	0	1675	53.25	1.48	1.10	1.63	-
53	30	1177	524	773	1801	1	5140	44.52	2.33	1.50	3.50	5140
61	15	689	213	293	632	0	4218	30.91	2.16	0.69	1.50	-
62	4	910	620	746	1833	16	7599	68.13	2.46	0.98	2.41	475
65	11	87	67	109	179	1	663	77.01	1.64	1.64	2.69	663
68	5	90	55	142	290	8	890	61.11	2.04	1.60	3.25	111
69	8	810	540	1173	2198	18	7290	66.67	1.87	1.61	3.02	405
71	7	141	104	334	480	0	1128	73.76	1.44	2.96	4.26	-

Table 1. (CONT.) Tournament summary for bass clubs participating in the 2001 B.I.T.E. program.

CLUB	TOURNAMENTS	NUMBER ANGLERS	NUMBER SUCCESSFUL	BASS CAUGHT	BASS WEIGHT	BASS=>5LB.	TOTAL HOURS	PERCENT SUCCESS	AVERAGE WEIGHT	BASS PER ANGLER-day*	LBS. PER ANGLER-day*	HOURS PER BASS=>5LB.
72	3	648	244	761	1694	18	5832	37.65	2.23	1.30	2.90	324
73	4	655	529	1309	2139	12	5240	80.76	1.63	2.50	4.08	437
76	8	226	155	210	453	4	2326	68.58	2.16	0.90	1.95	582
78	2	19	15	15	26	0	153.5	78.95	1.73	0.98	1.69	-
80	6	61	35	84	146	0	500	57.38	1.74	1.68	2.92	-
81	1	54	52	83	139	2	486	96.30	1.68	1.71	2.87	243
82	8	132	88	259	348	2	1327	66.67	1.34	1.95	2.62	664
83	35	1968	435	1387	2765	11	9946	22.10	1.99	1.39	2.78	904
84	1	11	3	4	12	0	88	27.27	2.88	0.45	1.31	-
85	2	36	16	29	88	3	216	44.44	3.03	1.34	4.06	72
87	8	258	107	78	194	1	1290	41.47	2.49	0.60	1.51	1290
102	7	2151	1629	2523	5716	69	19865.5	75.73	2.27	1.27	2.88	288
119	10	88	54	113	185	0	798.5	61.36	1.63	1.42	2.31	-
123	13	240	189	350	679	3	2349	78.75	1.94	1.49	2.89	783
129	11	156	99	247	405	2	1375	63.46	1.64	1.80	2.94	688
164	4	131	72	136	314	8	1084	54.96	2.31	1.25	2.89	136
165	19	310	238	714	1053	5	2698	76.77	1.47	2.65	3.90	540
255	9	191	144	427	756	0	1935.89	75.39	1.77	2.21	3.91	-
260	2	17	10	17	54	2	136	58.82	3.19	1.25	3.99	68
448	9	200	113	255	387.92	2	1600	56.50	1.52	1.59	2.42	800
493	3	34	28	74	111	1	290	82.35	1.50	2.55	3.83	290
512	10	120	77	222	335	0	1151	64.17	1.51	1.93	2.91	-
548	2	36	30	66	125	0	347	83.33	1.89	1.90	3.60	-
806	11	180	144	259	455	2	1657.5	80.00	1.76	1.56	2.74	829

Table 1. (CONT.) Tournament summary for bass clubs participating in the 2001 B.I.T.E. program.

CLUB	TOURNAMENTS	NUMBER ANGLERS	NUMBER SUCCESSFUL	BASS CAUGHT	BASS WEIGHT	BASS=>5LB.	TOTAL HOURS	PERCENT SUCCESS	AVERAGE WEIGHT	BASS PER ANGLER-day*	LBS. PER ANGLER-day*	HOURS PER BASS=>5LB.
844	12	157	104	253	429	4	1481.25	66.24	1.69	1.71	2.89	370
4532	4	38	28	54	107	0	294	73.68	1.99	1.84	3.65	-
4691	7	130	66	116	204	0	1032	50.77	1.76	1.12	1.98	-
TOTALS	463	18685	10837	21658	42700	304	144189.64	58.00	1.97	1.50	2.96	474

\*BASED ON A 10 HOUR FISHING DAY

Table 2. Statewide\*\* reservoir summary of tournament data reported to the 2001 B.I.T.E. program.

RESERVOIR	TOURNAMENTS	NUMBER ANGLERS	NUMBER SUCCESSFUL	BASS CAUGHT	BASS WEIGHT	BASS=>5LB.	TOTAL HOURS	PERCENT SUCCESS	AVERAGE WEIGHT	BASS PER ANGLER-day*	LBS. PER ANGLER-day*	HOURS PER BASS=>5LB.
BARKLEY	9	491	287	399	1116	15	4184.5	58.45	2.80	0.95	2.67	279
BAY SPRINGS	2	16	12	22	37	1	128	75.00	1.67	1.72	2.87	128
BEECH LAKE	1	11	3	4	12	0	88	27.27	2.88	0.45	1.31	-
BOONE	10	249	102	160	386	3	1865	40.96	2.41	0.86	2.07	622
CANEY FORK RIVER	2	58	30	69	88	1	464	51.72	1.27	1.49	1.89	464
CENTER HILL	4	283	137	173	432	0	2243	48.41	2.50	0.77	1.93	-
CHEATHAM	21	465	305	510	915	7	4046	65.59	1.79	1.26	2.26	578
CHEROKEE	20	805	408	794	1931	9	6793.39	50.68	2.43	1.17	2.84	755
CHICKAMAUGA	56	2287	679	1853	3646	16	12997	29.69	1.97	1.43	2.81	812
CORDELL HULL	6	242	167	339	525	4	1914	69.01	1.55	1.77	2.74	479
DALE HOLLOW	1	22	12	21	34	0	154	54.55	1.63	1.36	2.23	-
DOUGLAS	31	850	749	2399	3498	6	7435.5	88.12	1.46	3.23	4.70	1239
FT. LOUDOUN	11	200	95	152	312	3	1665.5	47.50	2.06	0.91	1.88	555
FT. LOUDOUN/TELLICO	15	954	534	1060	2265	23	8114.75	55.97	2.14	1.31	2.79	353
FT. PATRICK HENRY	1	24	17	39	49	0	192	70.83	1.26	2.03	2.57	-
GUNTERSVILLE	31	1037	772	1603	3626	58	10560.5	74.45	2.26	1.52	3.43	182
KENTUCKY LAKE	43	2189	1728	3022	6566	40	19797.5	78.94	2.17	1.53	3.32	495
KEOWEE	1	20	20	115	210	0	330	100.00	1.83	3.48	6.37	-
MELTON HILL	9	167	121	331	419	0	1400	72.46	1.27	2.36	2.99	-
NICKAJACK	3	39	25	60	113	0	330	64.10	1.88	1.82	3.42	-
NORMANDY	2	48	14	19	34	0	372.5	29.17	1.77	0.51	0.90	-
NORRIS	5	271	212	262	534	5	2375.5	78.23	2.04	1.10	2.25	475
OLD HICKORY	7	638	420	594	1273	15	5608.5	65.83	2.14	1.06	2.27	374
PERCY PRIEST	29	1588	735	839	1954	12	10986.5	46.28	2.33	0.76	1.78	916
PICKWICK	50	2167	1463	4004	6794	45	18939.5	67.51	1.70	2.11	3.59	421
REELFOOT LAKE	1	6	3	11	38	2	48	50.00	3.45	2.29	7.92	24

Table 2. (CONT.) Statewide\*\* reservoir summary of tournament data reported to the 2001 B.I.T.E. program.

RESERVOIR	TOURNAMENTS	NUMBER ANGLERS	NUMBER SUCCESSFUL	BASS CAUGHT	BASS WEIGHT	BASS=>5LB.	TOTAL HOURS	PERCENT SUCCESS	AVERAGE WEIGHT	BASS PER ANGLER-day*	LBS. PER ANGLER-day*	HOURS PER BASS=>5LB.
RICHARD B. RUSSELL	1	27	26	179	328	1	459	96.30	1.83	3.90	7.14	459
ROCK ISLAND^	17	606	245	428	666	7	2424	40.43	1.56	1.77	2.75	346
SARDIS	1	15	6	7	10	0	135	40.00	1.41	0.52	0.73	-
SOUTH HOLSTON	5	121	62	144	301	2	933	51.24	2.09	1.54	3.22	467
TELLICO	6	114	61	116	244	8	956.5	53.51	2.10	1.21	2.55	120
TIMS FORD	32	1496	789	1167	2712	1	7855.5	52.74	2.32	1.49	3.45	7856
WATAUGA	9	254	134	299	550	3	1664	52.76	1.84	1.80	3.30	555
WATTS BAR	41	1734	962	1803	3797	40	13750	55.48	2.11	1.31	2.76	344
WEISS	1	9	9	56	97	0	135	100.00	1.72	4.15	7.15	-
WHEELER	26	849	647	2111	3193	9	7762.5	76.21	1.51	2.72	4.11	863
WILSON	9	126	80	136	297	0	1129	63.49	2.18	1.20	2.63	-
WOODS	6	91	71	193	250	0	776	78.02	1.29	2.49	3.22	-
<b>TOTALS</b>	<b>525</b>	<b>20569</b>	<b>12142</b>	<b>25493</b>	<b>49248</b>	<b>336</b>	<b>161012.64</b>	<b>59.03</b>	<b>1.93</b>	<b>1.58</b>	<b>3.06</b>	<b>479</b>

\*BASED ON A 10 HOUR FISHING DAY

\*\*INCLUDES TOURNAMENTS (63) FROM RESERVOIRS OF THE TENN. RIVER IN ALABAMA AND MISSISSIPPI

^ROCK ISLAND IS THE SAME AS GREAT FALLS

Table 3. Bass seven pounds and larger reported\* from 2001 B.I.T.E. and B.A.I.T. tournament reports.

WEIGHT (LBS)	DATE	LOCATION	REPORTING CLUB/ORGANIZATION
7.19	03/11	PICKWICK	FED EX BASS CLUB
7.38	03/10	PICKWICK	PICKWICK LAKE OUTDOOR TRAIL
7.40	10/07	WATTS BAR	BASS INVITATIONAL TEAM EVENTS-EAST TN
7.44	04/21	GUNTERSVILLE	ALABAMA DEPT.OF CONSERV. & NATURAL RESOURCES
7.50	10/20	GUNTERSVILLE	ALABAMA DEPT.OF CONSERV. & NATURAL RESOURCES
7.52	03/17	PERCY PRIEST	PROFESSIONAL BASS FISHERMAN,INC.
7.84	03/10	FT. LOUDOUN/TELLICO	BASS INVITATIONAL TEAM EVENTS-EAST TN
8.16	06/23	OLD HICKORY	BASS INVITATIONAL TEAM EVENTS-MIDDLE TN
8.20	03/24	FT. LOUDOUN/TELLICO	BASS "N" ACTION
8.38	03/17	KENTUCKY LAKE	TEKSID BASS ANGLERS
8.73	10/06	GUNTERSVILLE	PROFESSIONAL BASS FISHERMAN,INC.

\*Reported as big bass for each tournament

Table 4. Relative ranking for reservoirs with 5 or more tournaments reported in the 2001 B.I.T.E. program.\*

RANK	PERCENT SUCCESS	AVERAGE WEIGHT	BASS PER ANGLER-day	POUNDS PER ANGLER-day	HOURS PER BASS=>SLB.	OVERALL
1	Douglas	BARKLEY	Douglas	Douglas	TELLICO	GUNTERSVILLE^
2	KENTUCKY LAKE	CHEROKEE	Wheeler	Wheeler	GUNTERSVILLE^	KENTUCKY LAKE
3	NORRIS	BOONE	Woods	Pickwick^^	BARKLEY	Pickwick^^
4	Woods	PERCY PRIEST	Melton Hill	TIMS FORD	WATTS BAR	Douglas
5	Wheeler	TIMS FORD	Pickwick^^	GUNTERSVILLE^	Rock Island	Wheeler
6	GUNTERSVILLE^	GUNTERSVILLE^	WATAUGA	KENTUCKY LAKE	FT. LOUDOUN/TELLICO	BARKLEY
7	Melton Hill	WILSON	Cordell Hull	WATAUGA	OLD HICKORY	FT. LOUDOUN/TELLICO+
8	Cordell Hull	KENTUCKY LAKE	Rock Island	South Holston	Pickwick^^	South Holston+
9	Pickwick^^	OLD HICKORY	South Holston	Woods	South Holston	WATTS BAR+
10	OLD HICKORY	FT. LOUDOUN/TELLICO	KENTUCKY LAKE	Melton Hill	NORRIS	WATAUGA
11	CHEATHAM	WATTS BAR	GUNTERSVILLE^	CHEROKEE	Cordell Hull	TIMS FORD
12	WILSON	TELLICO	TIMS FORD	CHICKAMAUGA	KENTUCKY LAKE	Cordell Hull+
13	BARKLEY	South Holston	CHICKAMAUGA	FT. LOUDOUN/TELLICO	WATAUGA	Woods+
14	FT. LOUDOUN/TELLICO	FT. LOUDOUN	WATTS BAR	WATTS BAR	FT. LOUDOUN	TELLICO
15	WATTS BAR	NORRIS	FT. LOUDOUN/TELLICO	Rock Island	CHEATHAM	OLD HICKORY
16	TELLICO	CHICKAMAUGA	CHEATHAM	Cordell Hull	BOONE	CHEROKEE
17	WATAUGA	WATAUGA	TELLICO	BARKLEY	CHEROKEE	Melton Hill+
18	TIMS FORD	CHEATHAM	WILSON	WILSON	CHICKAMAUGA	NORRIS+
19	South Holston	Pickwick^^	CHEROKEE	TELLICO	Wheeler	Rock Island
20	CHEROKEE	Rock Island	NORRIS	OLD HICKORY	PERCY PRIEST	WILSON
21	FT. LOUDOUN	Cordell Hull	OLD HICKORY	CHEATHAM	Douglas	CHEATHAM
22	PERCY PRIEST	Wheeler	BARKLEY	NORRIS	TIMS FORD	CHICKAMAUGA
23	BOONE	Douglas	FT. LOUDOUN	BOONE	Woods	BOONE
24	Rock Island	Woods	BOONE	FT. LOUDOUN	Melton Hill	FT. LOUDOUN+
25	CHICKAMAUGA	Melton Hill	PERCY PRIEST	PERCY PRIEST	WILSON	PERCY PRIEST+

\*Size limit restrictions in effect on CAPITALIZED reservoirs.

^In Tennessee portion, size limit restriction on smallmouth bass only.

^^Size limit restrictions on smallmouth bass.

+Tie



Table 5. Clubs or Organizations contributing to the 2001 B.I.T.E. report.

CLUB NAME	CLUB REPRESENTATIVE	ADDRESS	CITY	STATE	ZIPCODE	PHONE
BASS "N" ACTION	M.B. Ausban	P.O. Box 5536	Knoxville	TN	37928	865/687-2981
BASS INVITATIONAL TEAM EVENTS-EAST TN	Jane Kawakami	11728 Georgetown Dr.	Knoxville	TN	37922	865/966-5784
BASS INVITATIONAL TEAM EVENTS-MIDDLE TN	Jane Kawakami	11728 Georgetown Dr.	Knoxville	TN	37922	865/966-5784
BASS 'N' MATES	Chuck Johns	18 Duncan Dr.	Atoka	TN	38004	901/837-4919
BASSMASTERS OF EAST TENN.	Bill Hart	219 Putman Ln.	Mountain City	TN	37683	423/727-2714
BEND OF THE RIVER BASS CLUB	Casey Hitchcock	P.O. Box 1184	Dunlap	TN	37327	423/949-6022
BLUE RIDGE BASSMASTERS	Shane Howard	616 Sleepy Hollow Rd.	Oliver Springs	TN	37840	865/435-5307
CHEATHAM COUNTY BASS CLUB	Mike Stubbs	P.O. Box 110478	Nashville	TN	37222	615/269-4217
CHEROKEE BASSMASTERS	Eddie Mullins	Route 2, Box 3431	Bean Station	TN	37708	865/993-3540
CLARKSVILLE BASS CLUB	Ken Head	P.O. Box 554	Clarksville	TN	37040	931/358-9575
DAYTON WORKING MAN BASS CLUB	Perry Massengill	2993 Old Dixie Hwy	Evensville	TN	37332	423/570-0910
EAST TENNESSEE BASS ANGLERS	Brad Allison	10641 Dogwood Dr.	Knoxville	TN	37931	865/927-3905
FED EX BASS CLUB	Ron Crutchfield	3817 Aaron Cove	Bartlett	TN	38135	901/382-9313
FOUNTAIN CITY BASS CLUB	Randy Miller	P.O. Box 900	Knoxville	TN	37901	865/215-1021
FRIDAY NIGHT BIG FISH	Lewis Ledbetter	221 Joann Ct.	Nashville	TN	37211	615/833-1788
GALLATIN ASSOC. BASS ANGLERS (GABA)	William Pickard	P.O. Box 1392	Gallatin	TN	37066	615/451-0604
GOLDEN CIRCLE BASS ANGLERS	Paul Attales	97 Thornfield Dr.	Bells	TN	38006	731/664-3002
GREENRIDGE BASS CLUB	Mike Binkley	4548 N. Wallace	Springfield	TN	37172	615/384-4447
GUYS AND GALS BASS ANGLERS	Jane Kawakami	11728 Georgetown	Knoxville	TN	37922	865/966-5784
HAMILTON COUNTY BASS CLUB	Phil Dietsch	506 Heartheron Ln.	Hixson	TN	37343	423/877-9231
JACK DANIELS BASSMASTERS	Russ Reynolds	41 Franklin Rd.	Tullahoma	TN	37388	931/455-5700
JACKSON BASS CLUB	Ed Weaver	210 Pennington Pl.	Jackson	TN	38305	731/668-6535
KENNY'S FISHING CLUB	Charles Graybeal Jr.	P.O. Box 712	Erwin	TN	37650	423/743-4346
KENTUCKY LAKE BASS ANGLERS	Charles Mitchell	2597 Ogden Rd.	McEwen	TN	37101	931/296-4428
KENTUCKY LAKE OUTDOOR TRAIL	Randy Sullivan	587 Diamond Grove Rd.	Beech Bluff	TN	38313	901/423-4450
KINGSPORT BASS CLUB	Ralph Matlock	1604 Brumley St.	Kingsport	TN	37665	423/245-1270
LAWRENCEBURG BASS BUSTERS	E. F. Bryant	1505 Frances St.	Lawrenceburg	TN	38464	931/762-6025
LOUDON BASSMASTERS	Joe Kanipe	2418 Glen Meadow Rd.	Knoxville	TN	37909	865/531-7858
MADISON COUNTY BASS ANGLERS	Noel Long	232 Cobb Rd.	Jackson	TN	38305	731/424-7354
McNAIRY COUNTY BASS ANGLERS	Gilbert Gough	250 CR. 550	Ripley	MS	38663	662/837-7012
MIDDLE CREEK FISHING CLUB	David Slack	177 County Road 568	Englewood	TN	37329	423/745-4572

Table 5. (CONT.) Clubs or Organizations contributing to the 2001 B.I.T.E. report.

CLUB NAME	CLUB REPRESENTATIVE	ADDRESS	CITY	STATE	ZIPCODE	PHONE
MIDDLE TENNESSEE BASS ANGLERS	David Hanson	254 Southburn Dr.	Hendersonville	TN	37075	615/824-0835
MONROE COUNTY	Jimmie Presley	P.O. Box 207	Sweetwater	TN	37874	423/337-3475
MOUNTAINEER BASSMASTERS	Jeff Russell	370 Paint Rock Rd.	Kingston	TN	37763	865/376-3987
PERCY PRIEST SPORT FISHING	Jeff Roth	213 Deer Rd.	Smyrna	TN	37167	615/459-8019
PICKWICK BASS ANGLERS	Jim Mitchell	3400 Hwy. 203	Savannah	TN	38372	901/925-3675
PICKWICK LAKE OUTDOOR TRAIL	Randy Sullivan	587 Diamond Grove Rd.	Beech Bluff	TN	38313	901/427-5707
PROFESSIONAL BASS FISHERMAN, INC.	Mike Stubbs	P.O. Box 110478	Nashville	TN	37222	615/269-4217
REELFOOT LAKE BASS CLUB	Brent Callicott	1808 Shatz Rd.	Union City	TN	38261	901/885-7109
ROCK ISLAND	Lester Gooch	3976 Shelbyville Rd.	McMinnville	TN	37110	615/668-4402
SALE CREEK BASS CLUB	Creed Poole	15924 Poole Road	Sale Creek	TN	37373	423/332-3674
SIGNAL MTN. BASS CLUB	Jim Rigsby	12003 Oak Cove Lane	Soddy-Daisy	TN	37379	423/332-6654
SMOKY MTN. BASS ANGLERS	James Shallcross	12005 Olympic Dr.	Knoxville	TN	37922	865/675-2742
SPARTA BASS CLUB	Ricky England	154 Hawthorne Rd.	Sparta	TN	38583	931/738-9611
STATE LINE BASS CLUB	Joe Breckman	2916 Dotsonville Rd.	Clarksville	TN	37042	931/920-2905
TEKSID BASS ANGLERS	Shannon Underwood	1099 Old Co. House Rd.	Charlotte	TN	37036	615/789-3888
TENNESSEE BASS FEDERATION	A.D. Sanford	75 Hickory Flat Rd.	Cedar Grove	TN	38321	731/987-3061
TENNESSEE CHRISTIAN BASS ANGLERS	Steve A. Jones	805 Shady View Rd.	Kingsport	TN	37664	423/349-4110
TIMS FORD BASS CLUB	Bob Krueger	747 Wilkerson Ln.	Winchester	TN	37398	931/967-8063
TWIN CITY BASS CLUB	Gary Heath	30528 Lee Hwy.	Glade Spring	VA	24340	540/944-3115
VOLUNTEER BASS ANGLERS	Lawrence Sanford	120 Wood Cemetary Ln.	Jackson	TN	38305	731/423-8573
VOLUNTEER BASSMASTERS	Bill Hill	1431 Hill Road	Newport	TN	37821	423/623-8251
ALABAMA CONSERV. & NATURAL RESOURCES	James J. McHugh	64 North Union St.	Montgomery	AL	36130	334/242-3883
MISSISSIPPI WILDLIFE, FISHERIES, AND PARKS	Larry Pugh	P.O. Box 451	Jackson	MS	39205	662/840-5172

FIGURE 2. SEASONAL DISTRIBUTION OF TOURNAMENTS  
2001 B.I.T.E. PROGRAM

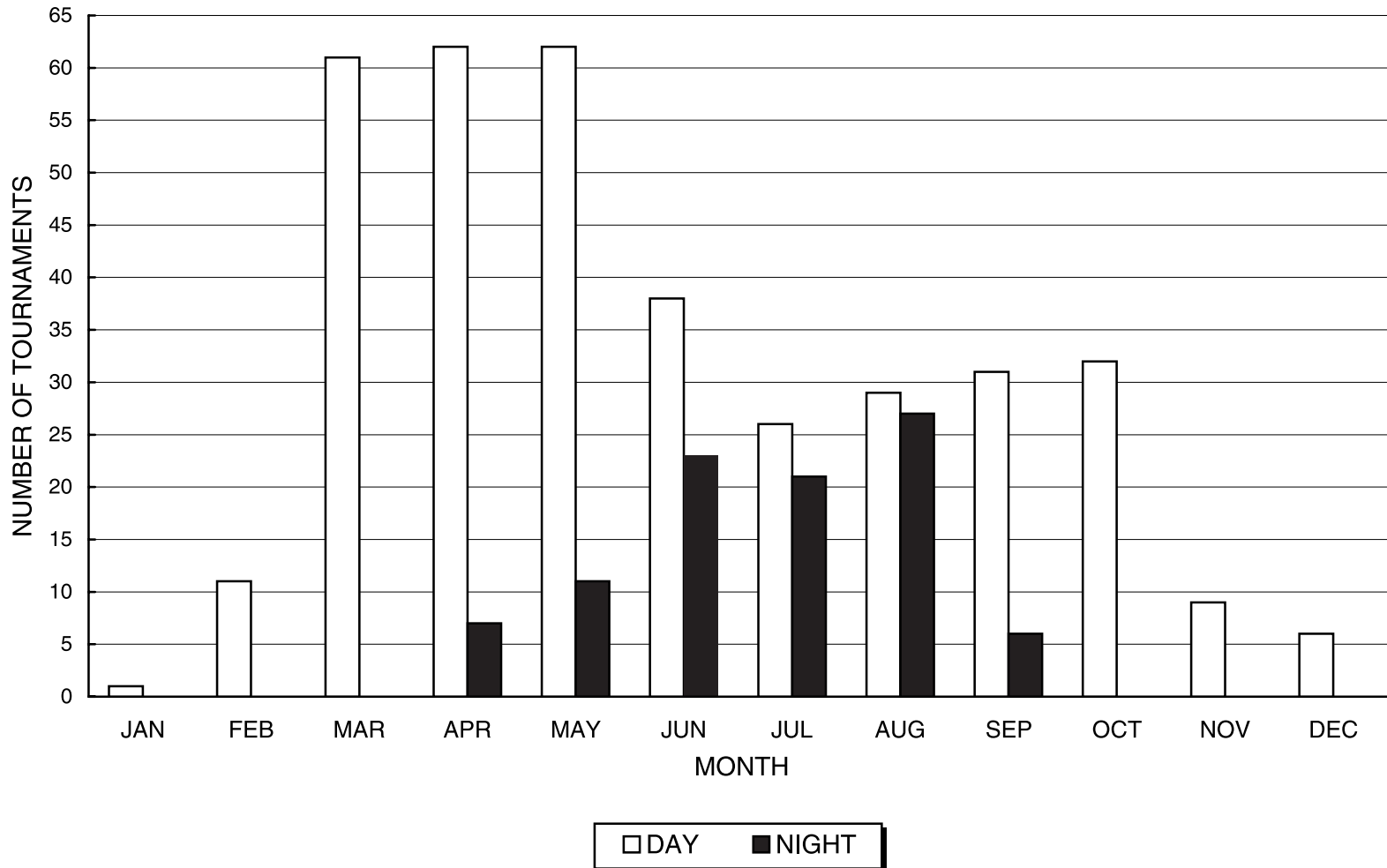
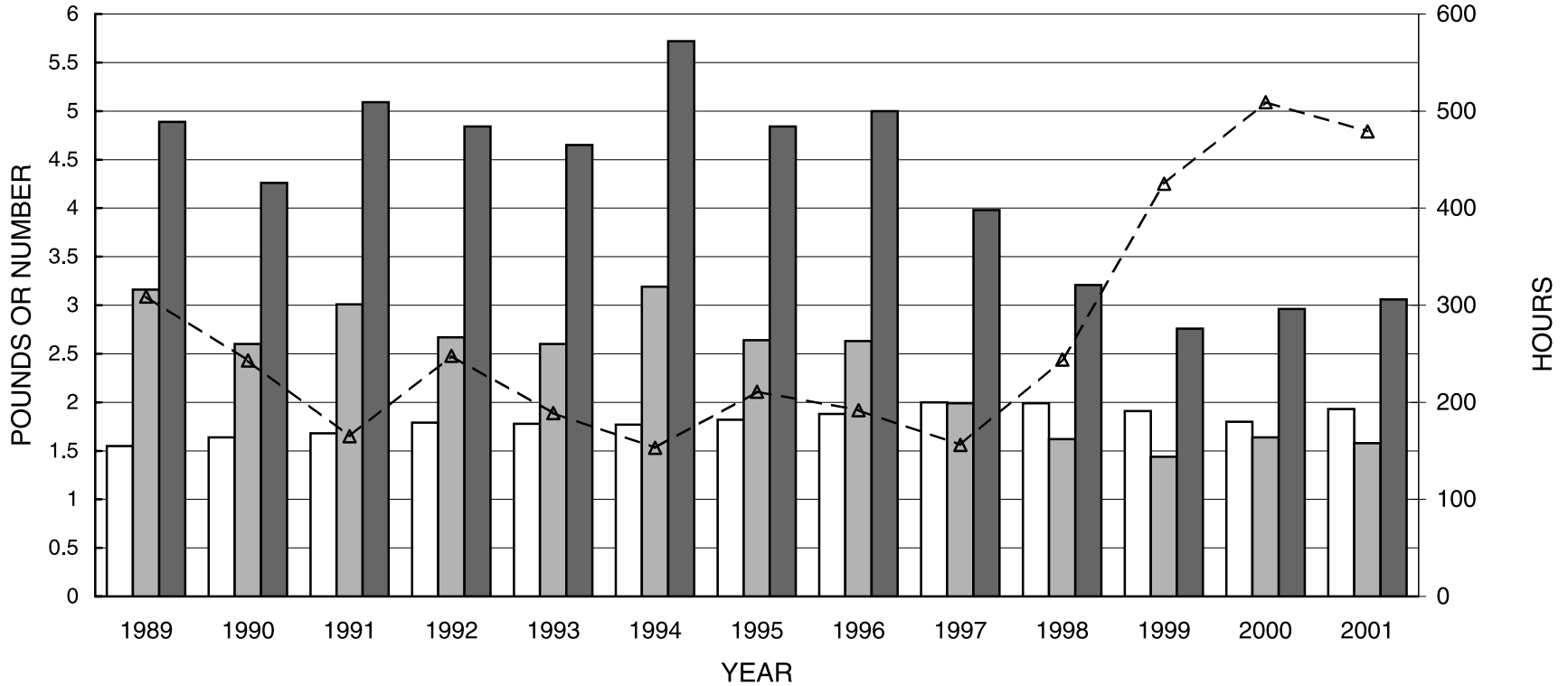


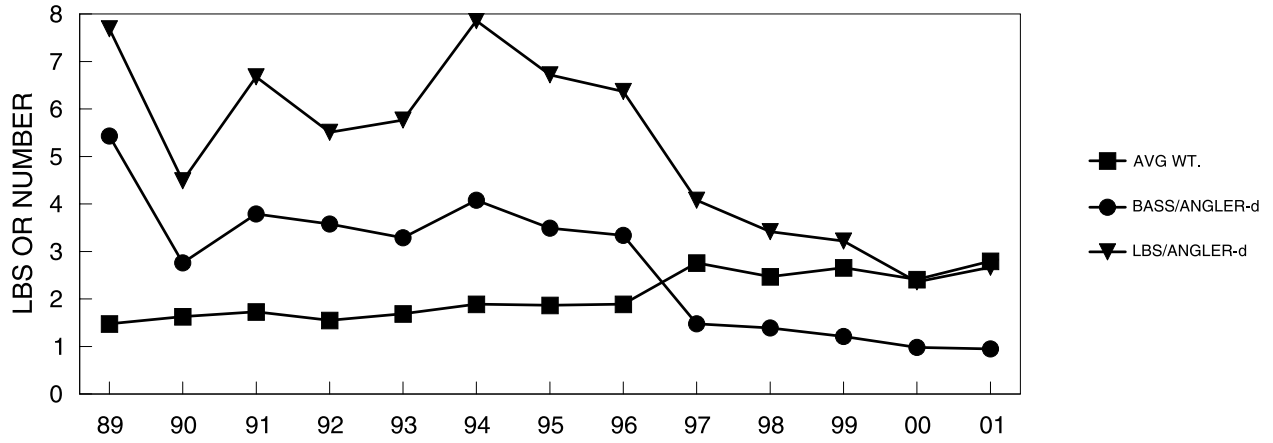
FIGURE 3. FISHING SUCCESS FOR REPORTED TOURNAMENTS



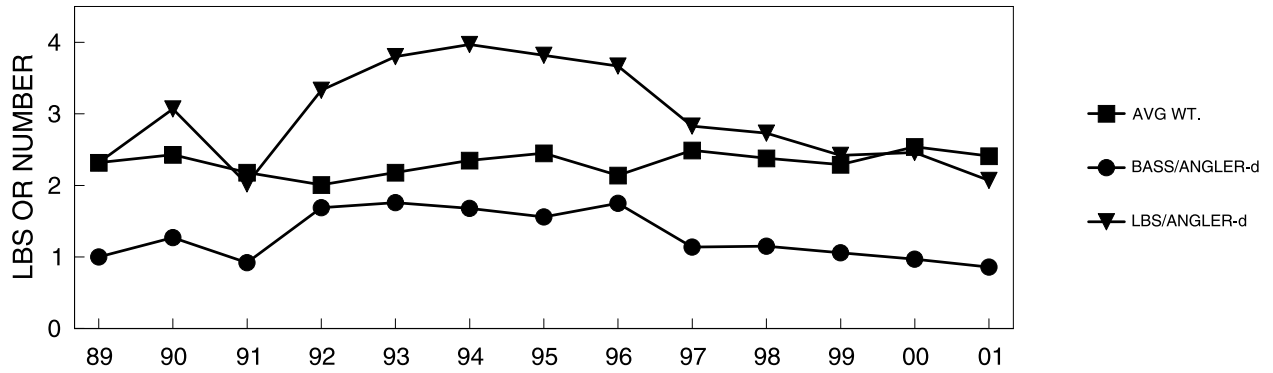
AVG. WEIGHT  
 
 BASS/ANGLER-day  
 
 LBS/ANGLER-day  
 
▲

 HRS/BASS=>5LB

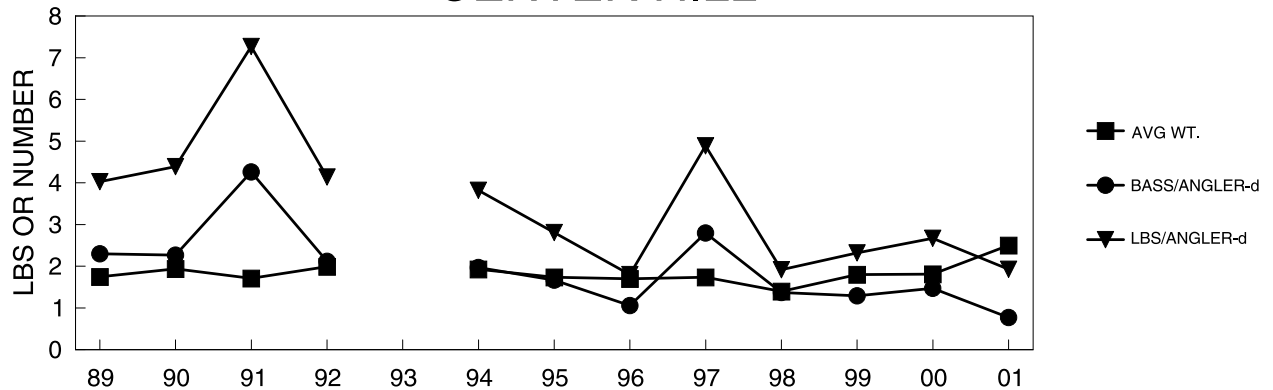
### APPENDIX BARKLEY



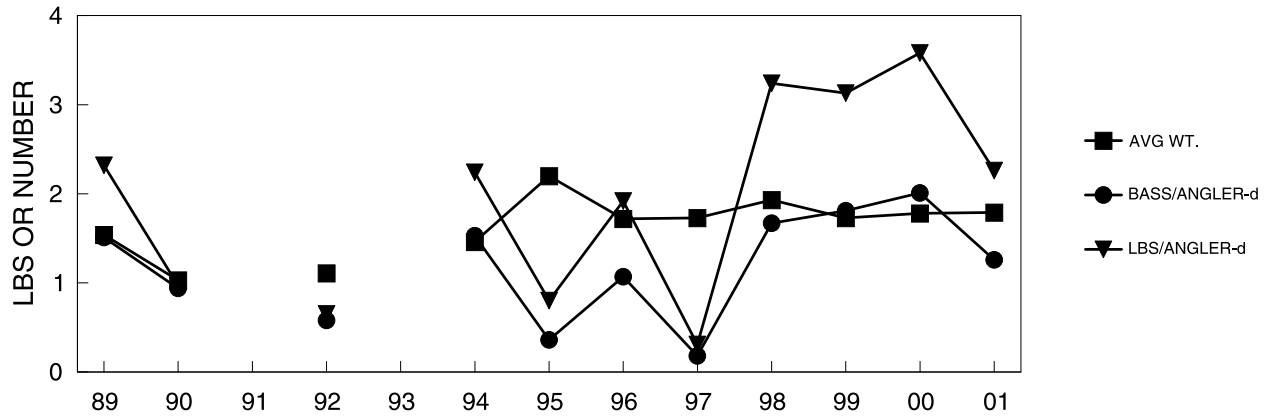
### BOONE



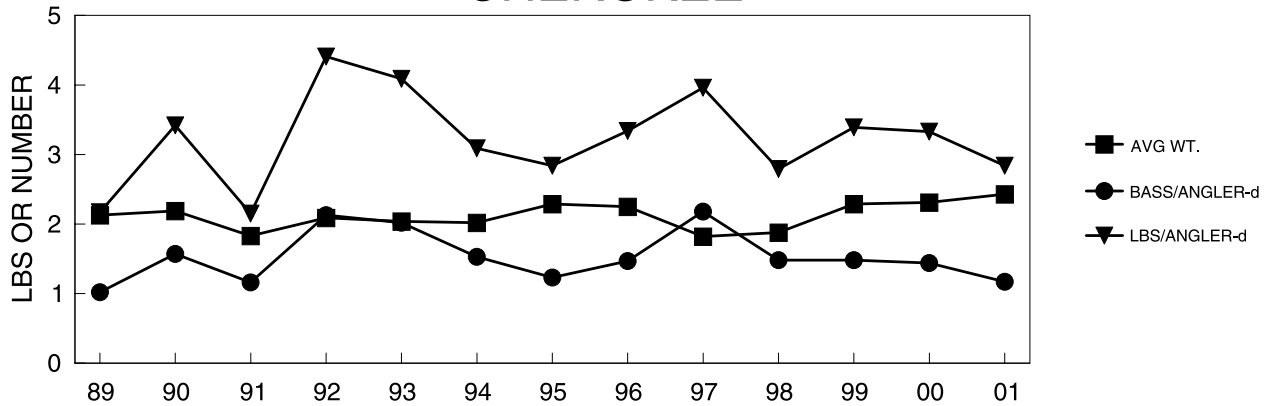
### CENTER HILL



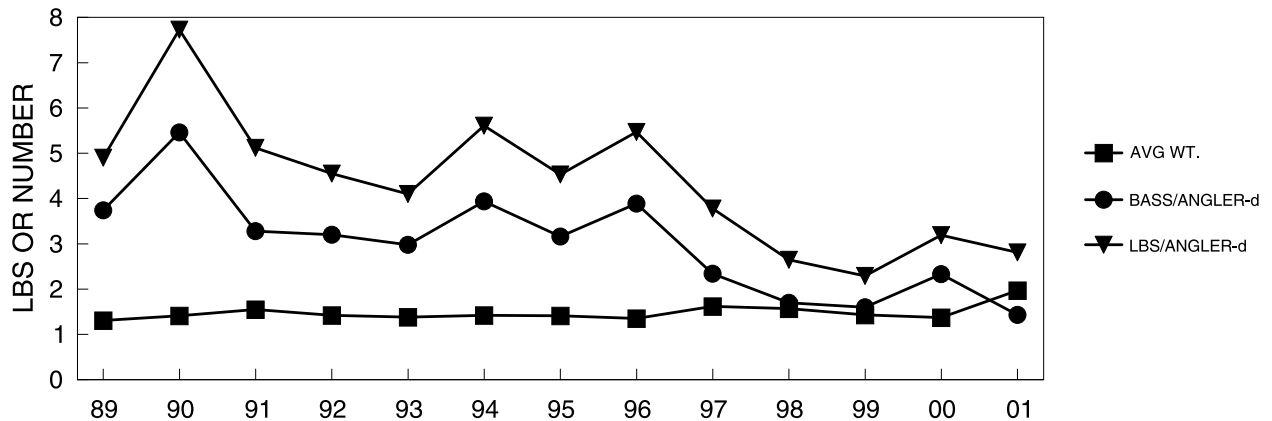
### APPENDIX CHEATHAM



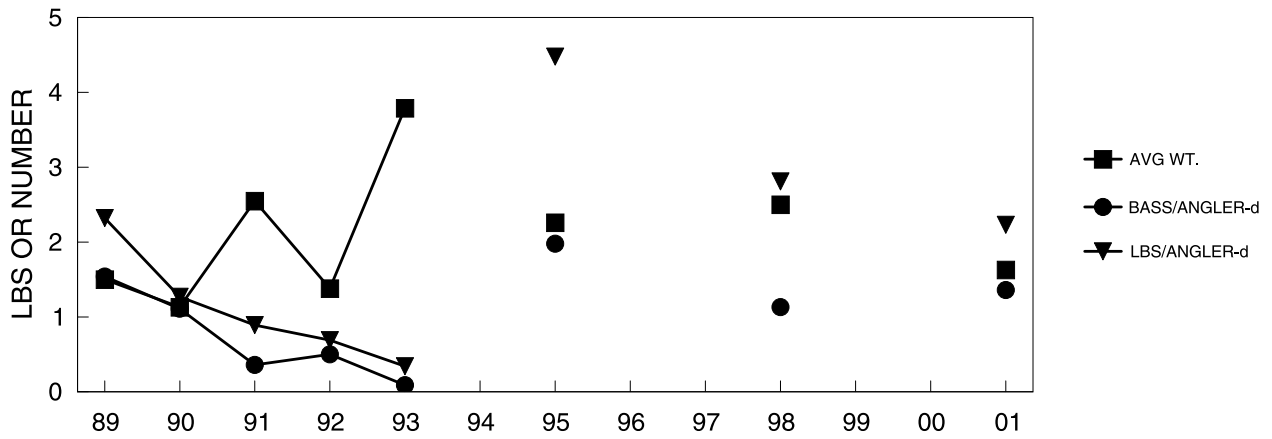
### CHEROKEE



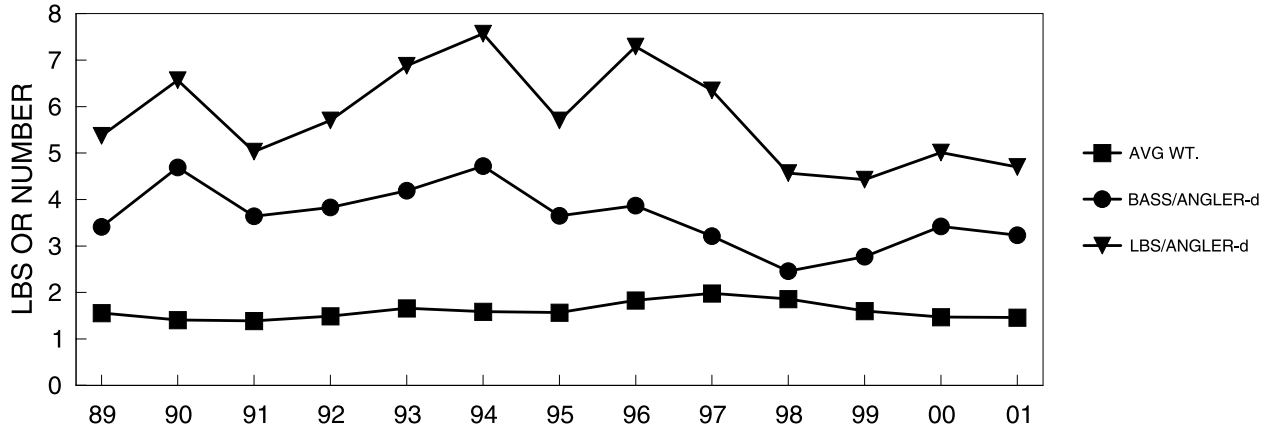
### CHICKAMAUGA



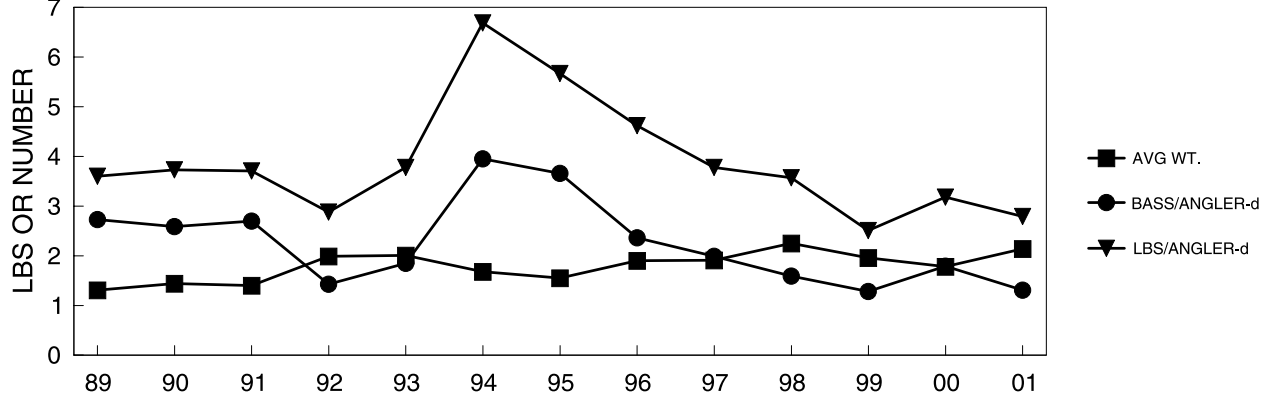
APPENDIX  
DALE HOLLOW



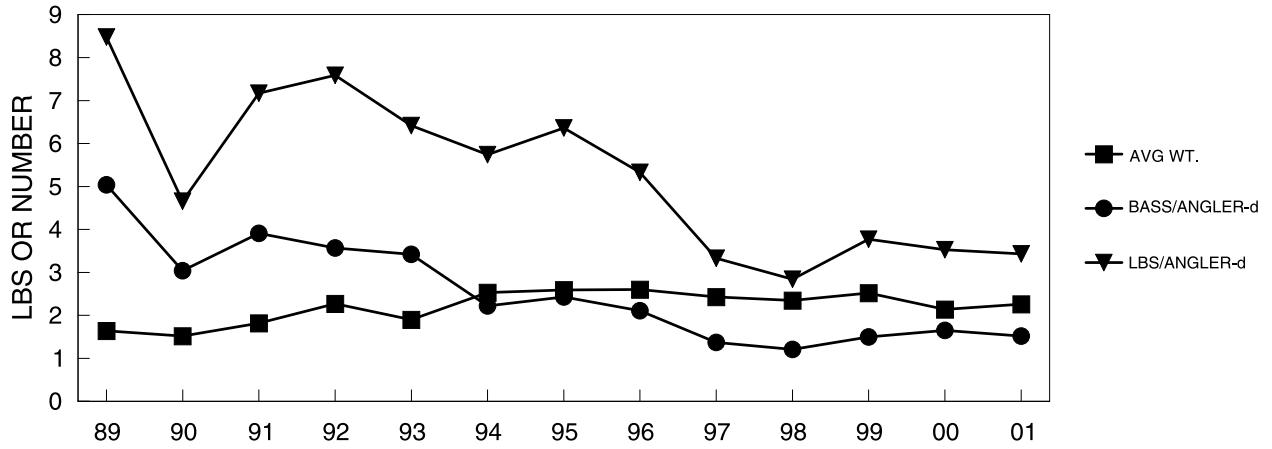
DOUGLAS



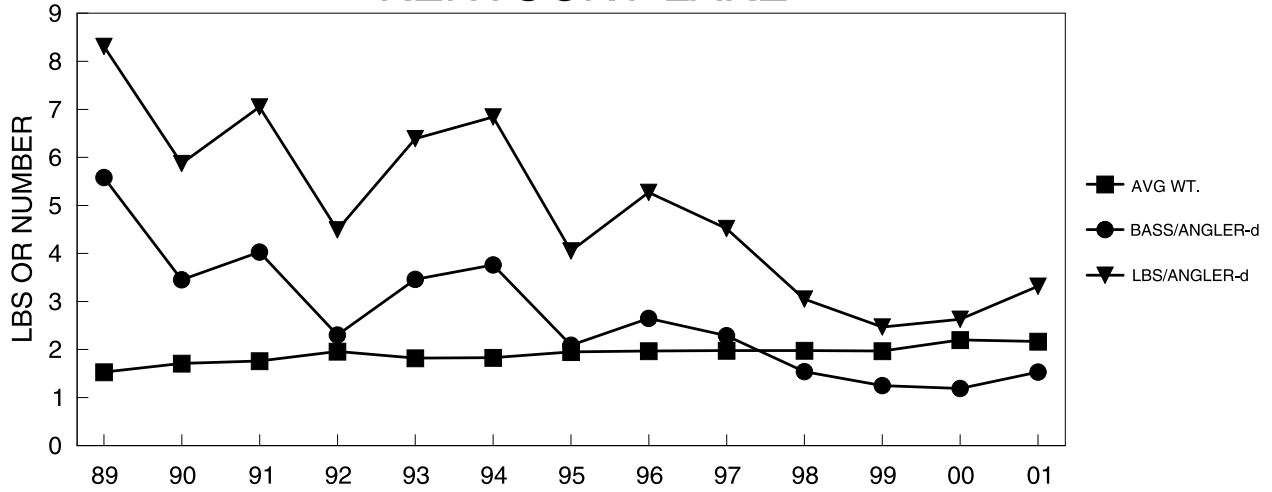
Ft. LOUDOUN/TELLICO



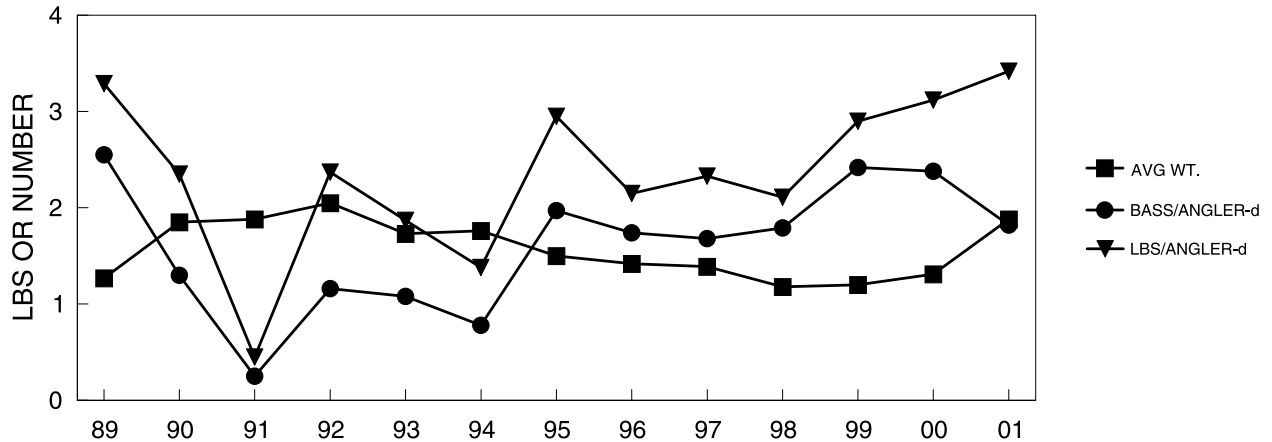
### APPENDIX GUNTERSVILLE



### KENTUCKY LAKE

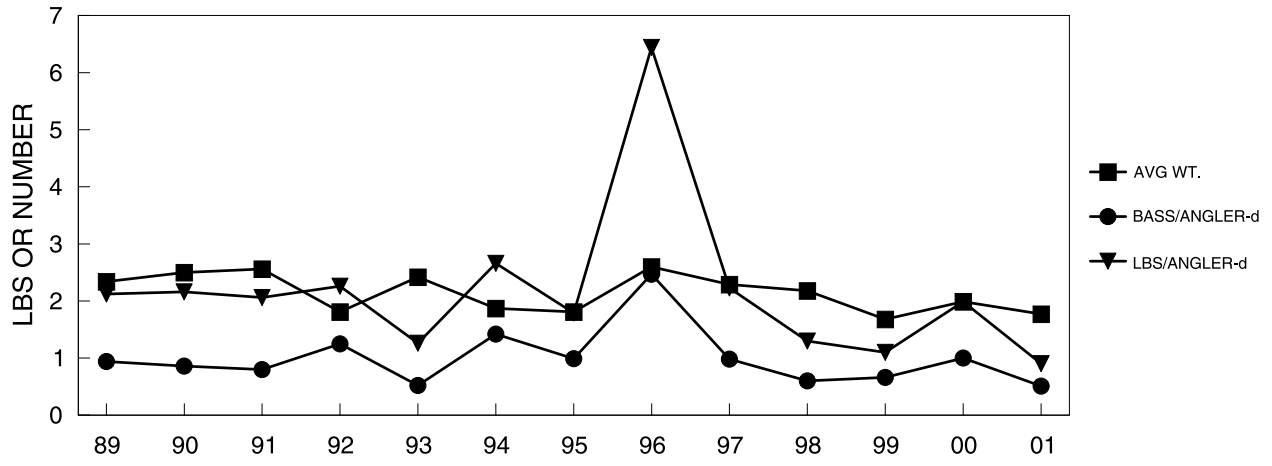


### NICKAJACK

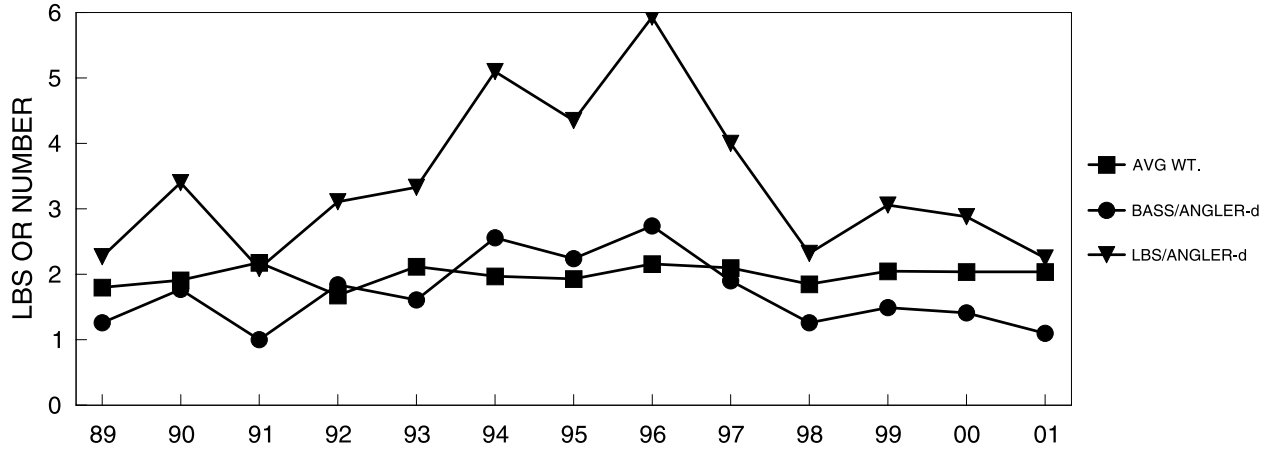




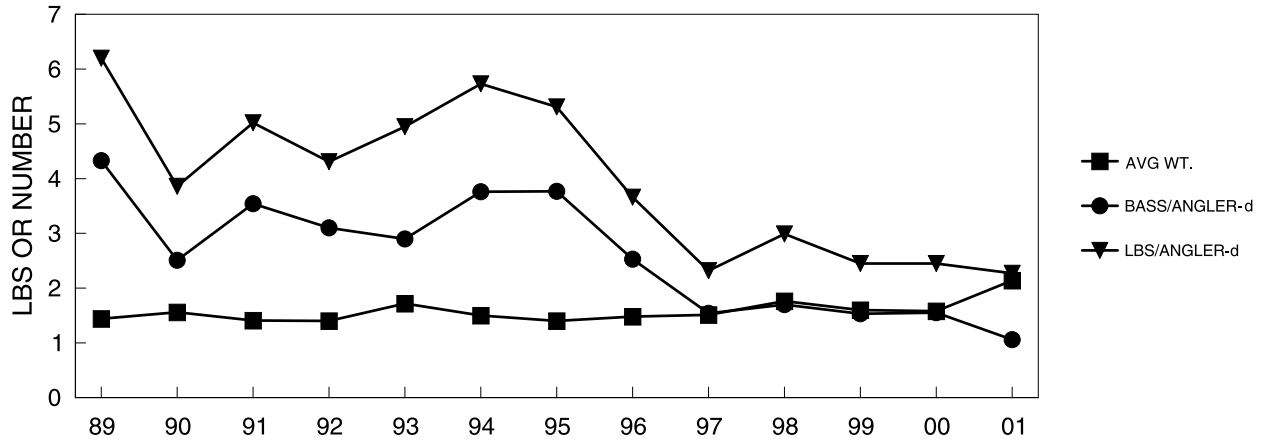
## APPENDIX NORMANDY



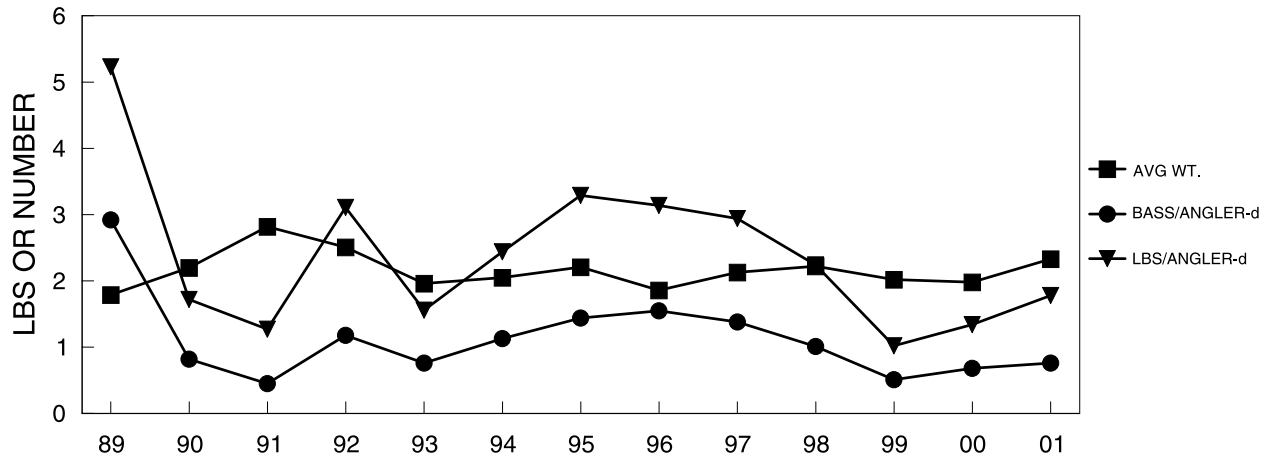
## NORRIS



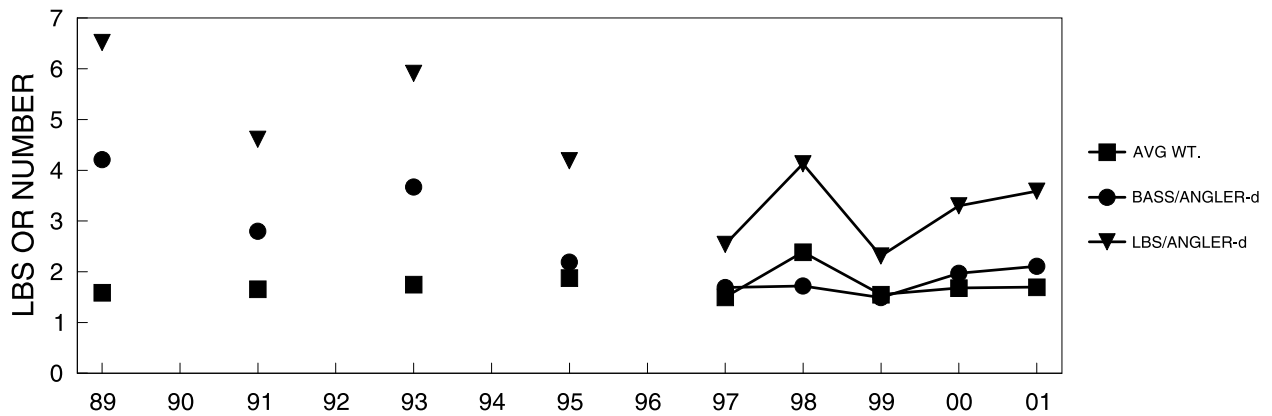
## OLD HICKORY



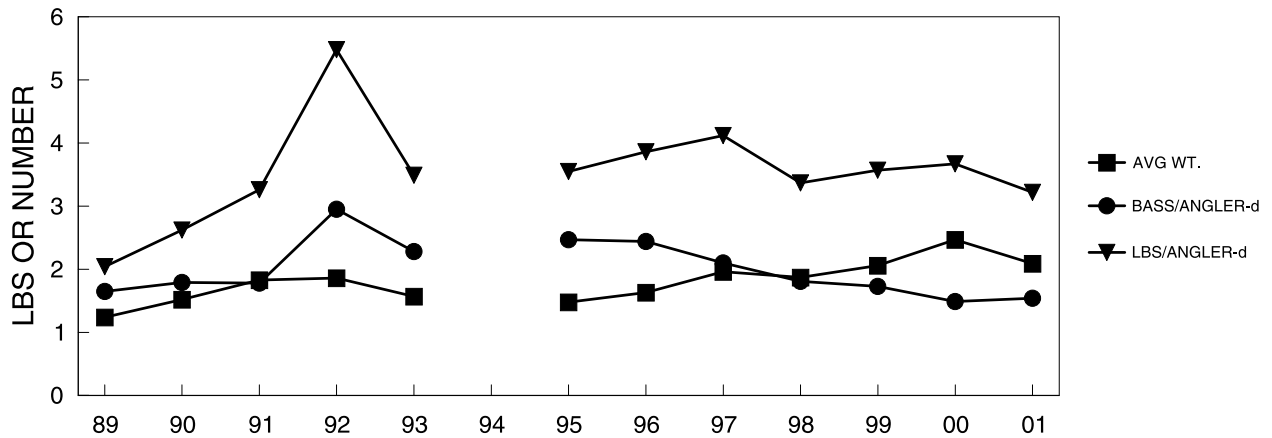
## APPENDIX PERCY PRIEST



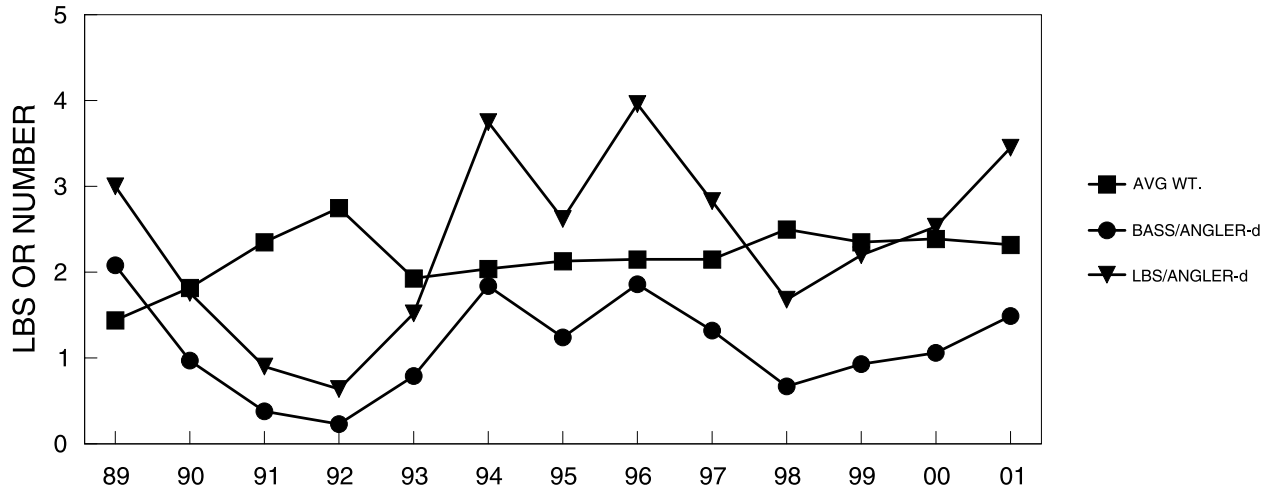
## PICKWICK



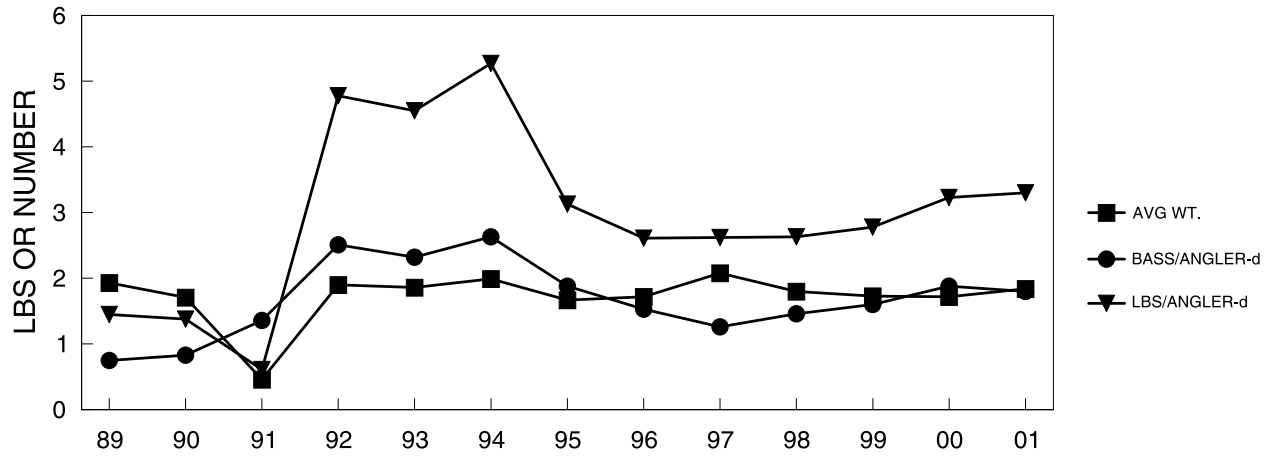
## SOUTH HOLSTON



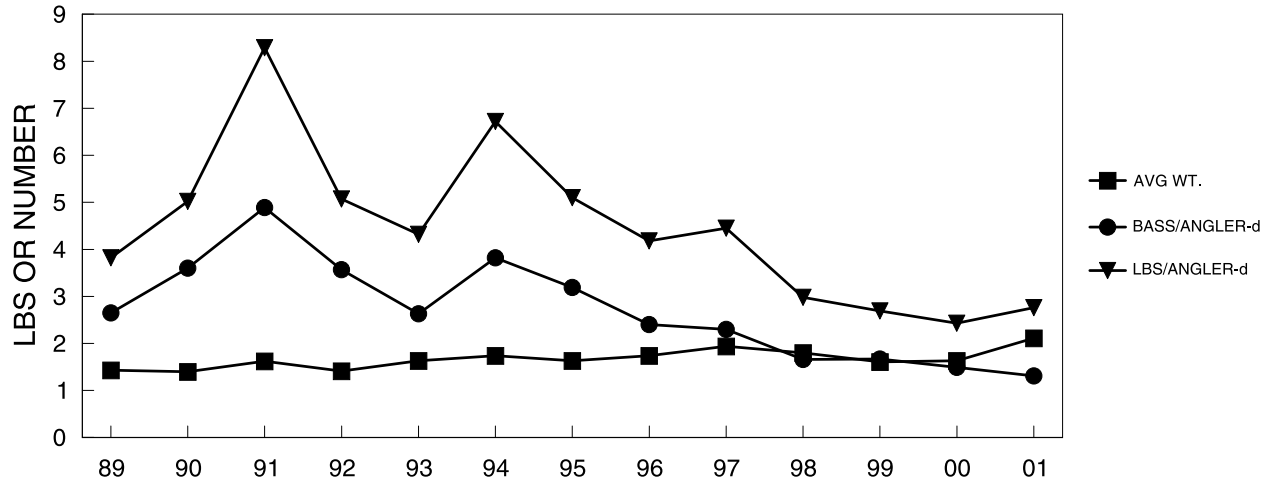
APPENDIX  
TIMS FORD



WATAUGA



WATTS BAR



APPENDIX  
WOODS

