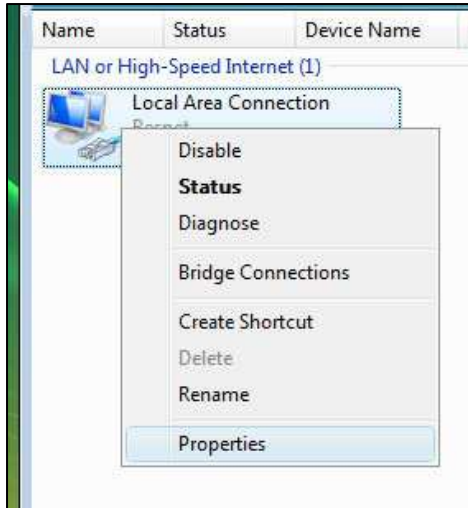
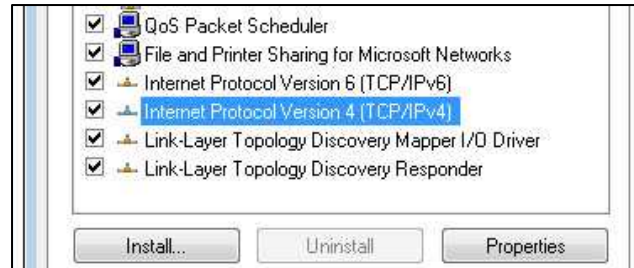


1. From the **Start Menu** enter '*ncpa.cpl*' into the **Start Search** field and press *Enter*.



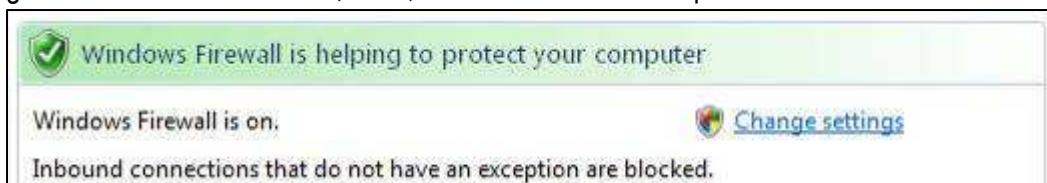
2. A new window appears. In this window you should find an icon labeled '*Local Area Connection*.' Right click the icon and click properties.
3. Double-click **Internet Protocol Version 4 (TCP/IPv4)**.



4. Verify that **both** '*Obtain an IP address automatically*' and '*Obtain DNS server address automatically*' are selected.
5. Click '*Ok*' twice and close the open window.

Configuring Your Firewall

1. Like the previous instruction set, from the **Start Menu** enter '*firewall.cpl*' into the **Start Search** field and press *Enter*.
2. Your configuration should look like this, if not, continue to the next step.

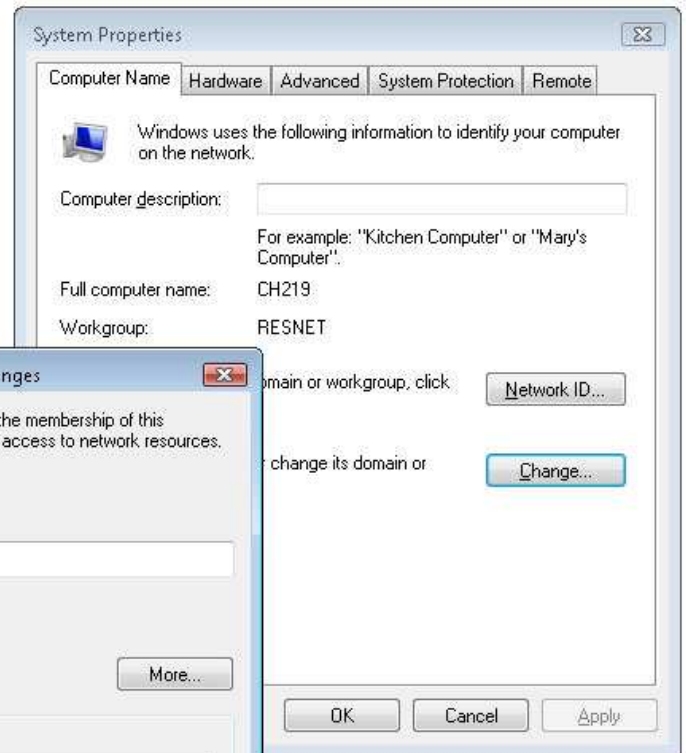


3. Click [Change settings](#) and click the radio button to turn on your Firewall and verify the '*Block all incoming connections*' check box **does not** have a check.
4. Click '*Ok*' and close the open window.

Renaming Your Computer

1. Like the previous two instruction sets, from the **Start Menu** enter 'sysdm.cpl' into the **Start Search** field and press **Enter**.
2. Click the "Change..." button.
3. Change your computer name to your building abbreviation plus room number plus port number (i.e. White Hall Room 119 Port 3 would translate to WT119-3)
4. Also change your Workgroup to RESNET.

Buildings & Their Abbreviations
Browning Hall - BG
Cooper Hall - CP
Crawford Hall - CR
Dunn Hall - DU
Ellington Hall - EH
Evins Hall - EV
Jobe Hall - JB
Maddux Hall - MX
Marshall Hall - ML
McCord Hall - MC
M.S. Cooper Hall - MS
Murphy Hall - MY
New Residence Hall - NR
Pinkerton Hall - PK
Tech Village Apartments - TV
Warf Hall - WF
White Hall - WT



Log In

Open your browser and go to <https://resnet.tntech.edu>. Enter your username and password and click 'Log-in.' New students will have to change their password from their social security number before logging in.

Congratulations, your computer is successfully configured. If you have any questions or need help give us a call at Ext 6566 or email us at resnet@tntech.edu.